




Alpine agriculture and Natura 2000: Recommendations for management and financial compensation for habitat types relevant for use

Franz Bergler - Manager of alp area in Styria

Bozen, 20.10.2006


  

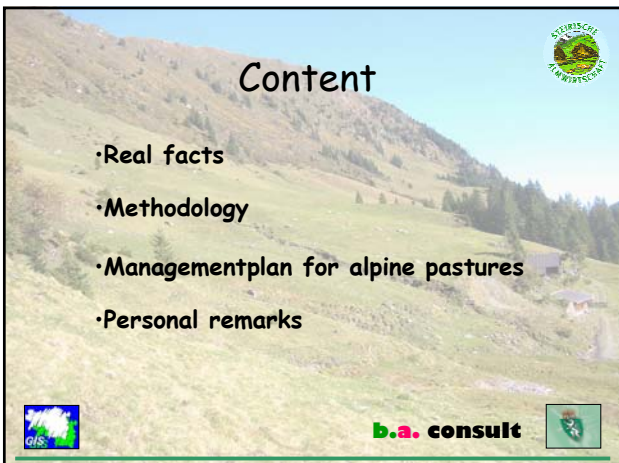





Alps






  








Content

- Real facts
- Methodology
- Managementplan for alpine pastures
- Personal remarks

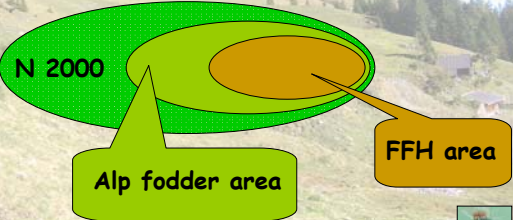



Background

- Area of Styria = 1.639.916 ha
- N 2000 area in Styria = 262.132 ha = 16 %
- Alp area in N 2000 = 127.100 ha = 48 %
- District area Liezen = 326.815 ha = 20 %
- Natura 2000 area in L. = 101.484 ha = 31 %
- Alp fodder area in L. = 27.379 ha = 8,4 %
- N 2000 + Alp fodder area in L. = 14.368 ha = 4,3 %

Methodology - part 1





• Real area

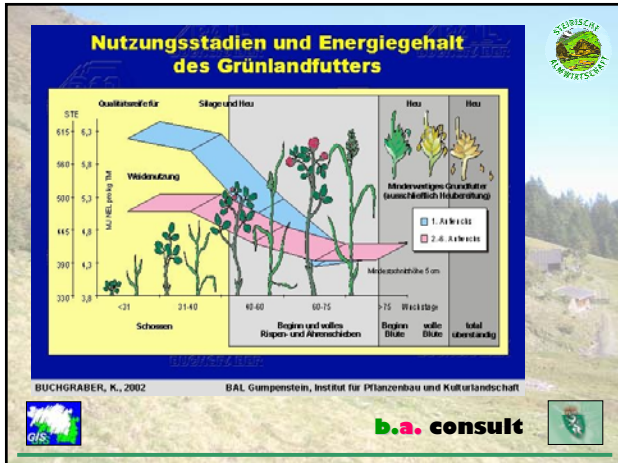





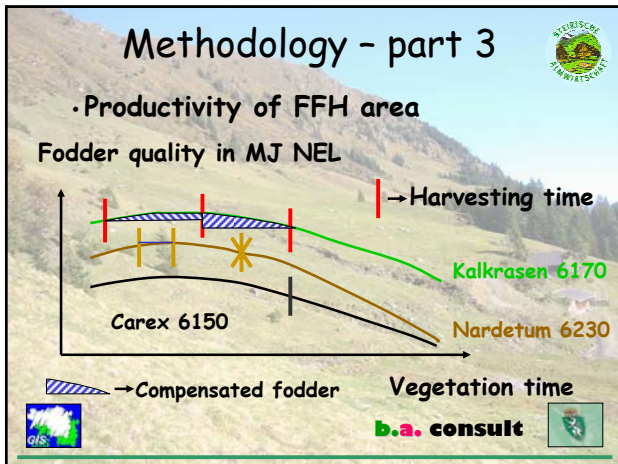
Methodology - part 2

• Compensation in FFH area

• Produce rate fodder

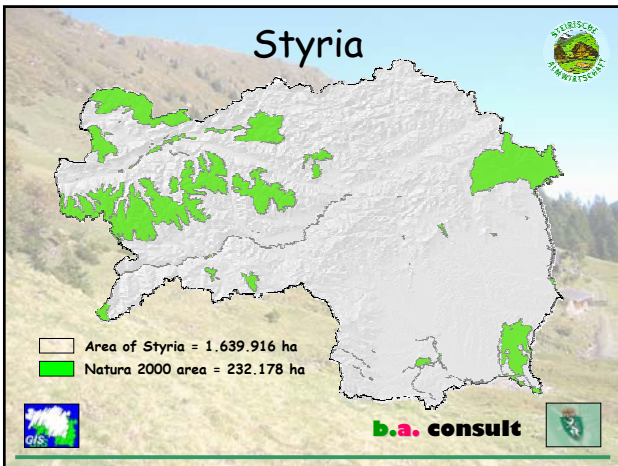





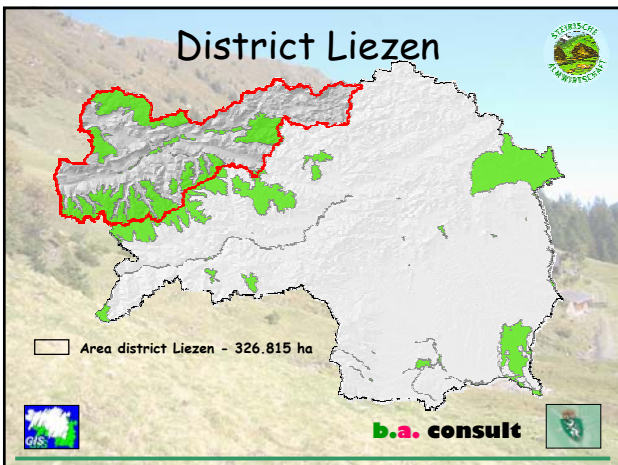


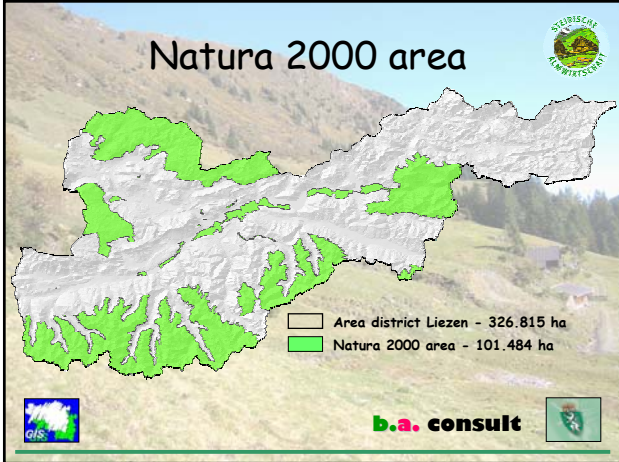


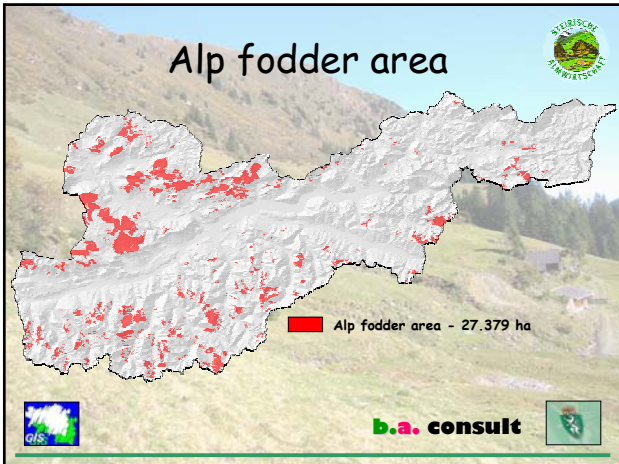


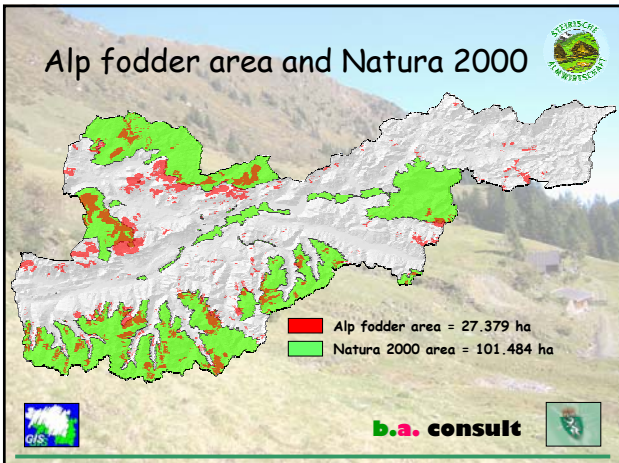


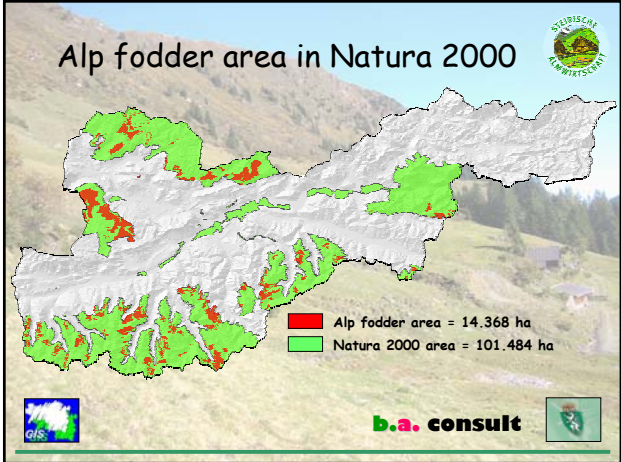


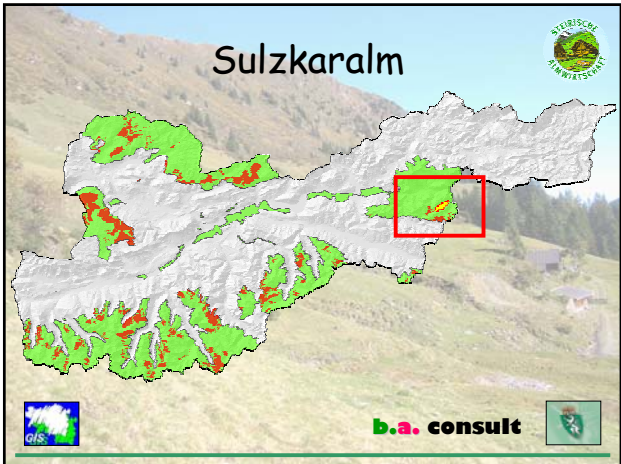


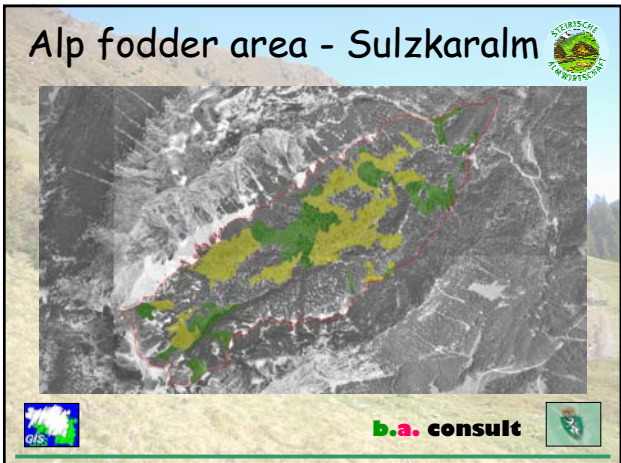


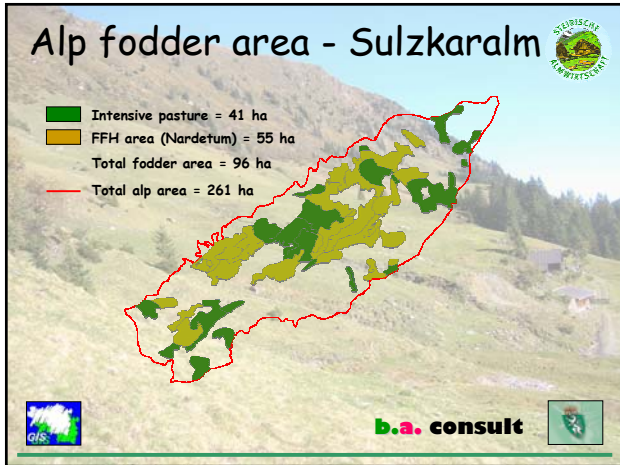




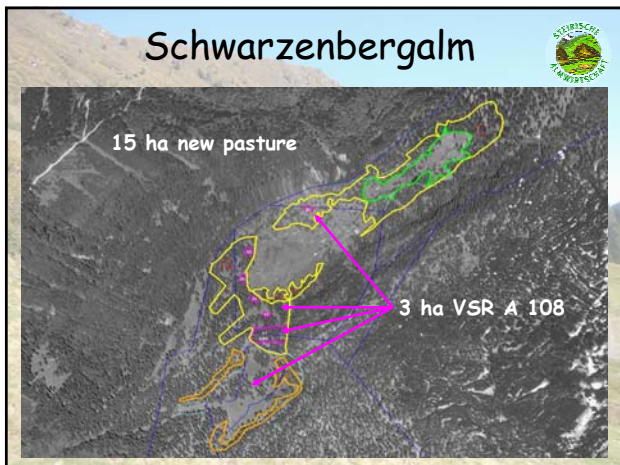












Managementplan - Schwarzenbergalm



b.a. consult



Managementplan - Schwarzenbergalm



b.a. consult





Thank you for your attention!



b.a. consult